

TITLE: DNA Shearing in low volume

Overview of Operating Conditions:

Target BP (Peak)	150	200 (Illumina TruSeq)
TUBE	microTUBE	microTUBE
Duty Cycle (S2/E210)	20%	10%
Duty Factor (S220/E220)	20%	10%
Intensity(S2/E210)	5	5
Peak Incident Power (S220/E220)	175	175
Cycles per Burst	200	200
Time (seconds)	155	120
Temperature (°C)	6-8	6-8
Water Level (E series)	6	6
Water level (S series)	12	12
Volume (ul)	52.5	52.5

After processing, and before to transfer the sample, we recommend to quickly centrifuge the microTUBE:

- 600RCF / 5s for a single tube
- 150RCF / 30s with a microTUBE plate

Adapters (pn 520059) are available to fit microTUBEs in bench top micro centrifuges.

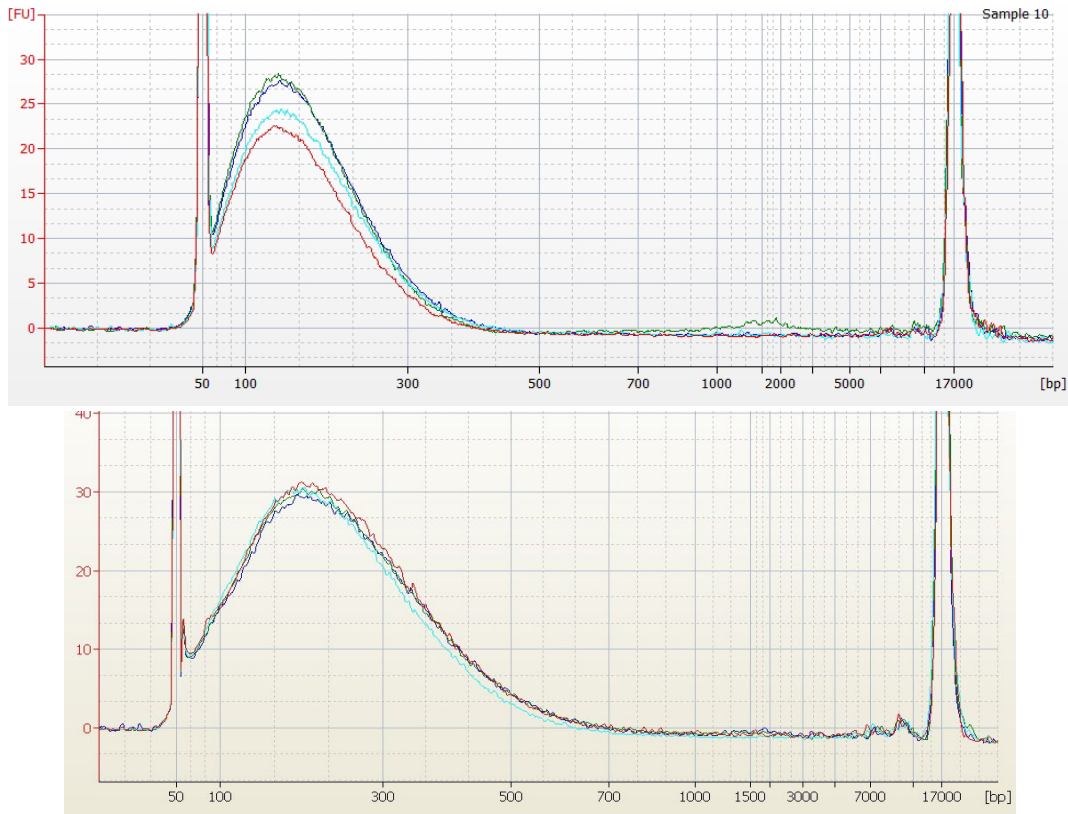


Figure 1 - Agilent 2100 Bioanalyser electropherogram (12k chip) - 4 replicates following 150bp protocol (top) and 200bp protocol (bottom)