

# truCOLLECT<sup>®</sup>

The advanced blood collection, stabilization, and storage system with active DNA extraction using Adaptive Focused Acoustics<sup>®</sup> (AFA<sup>®</sup>)

## Convenient

- Uses only 80  $\mu$ l of blood at time of collection

## Simplified Logistics

- No need for costly and complex cold chain logistics

## Standardized

- Optimized high-yield and high-quality DNA extraction with Covaris AFA

## Enabling Technology for Advanced Applications

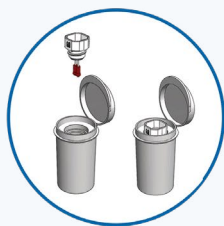
- Population Genomics
- Pediatric Screening
- Clinical Trials
- Animal Model Studies

### Simple, Traceable, and Scalable Workflow



#### Collect

- Transfer a small 80  $\mu$ l aliquot of blood
- Use previously collected or freshly procured blood
- Permanently attached 2D barcode provides sample traceability



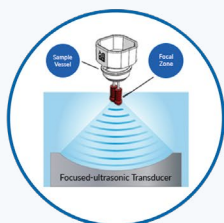
#### Stabilize

- Preserve sample integrity with active dry-stabilization
- Maintain the true biology of the sample
- Low cost, robust stabilization



#### Ship/Store

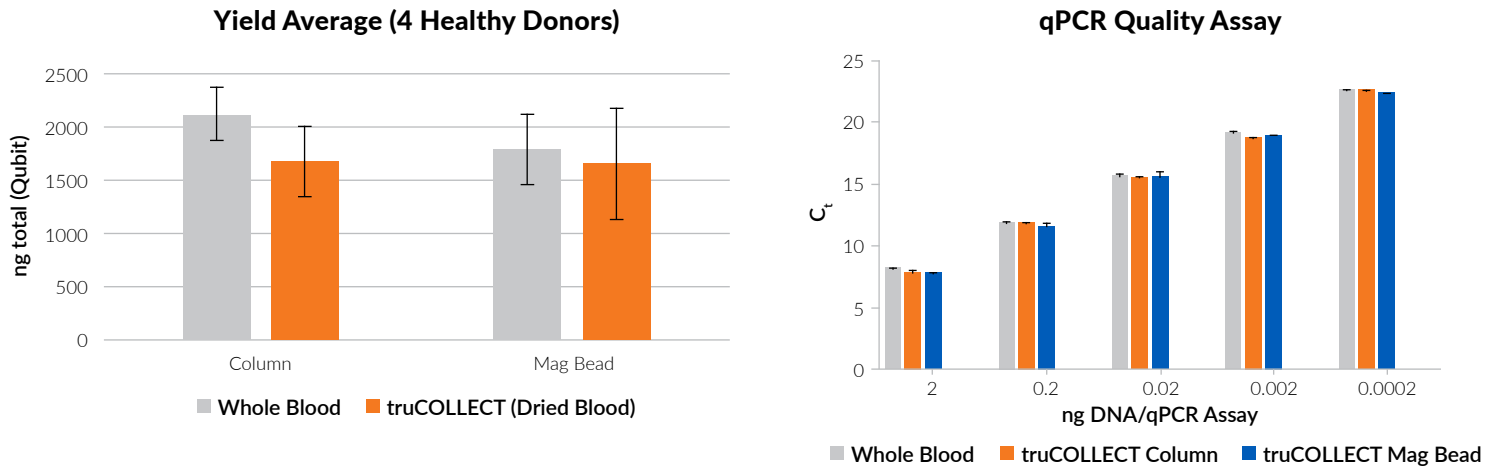
- Simplified shipping and storage logistics
- Reduce costs by using ambient shipping & storage
- Longer storage than fresh whole blood without special equipment or reagents



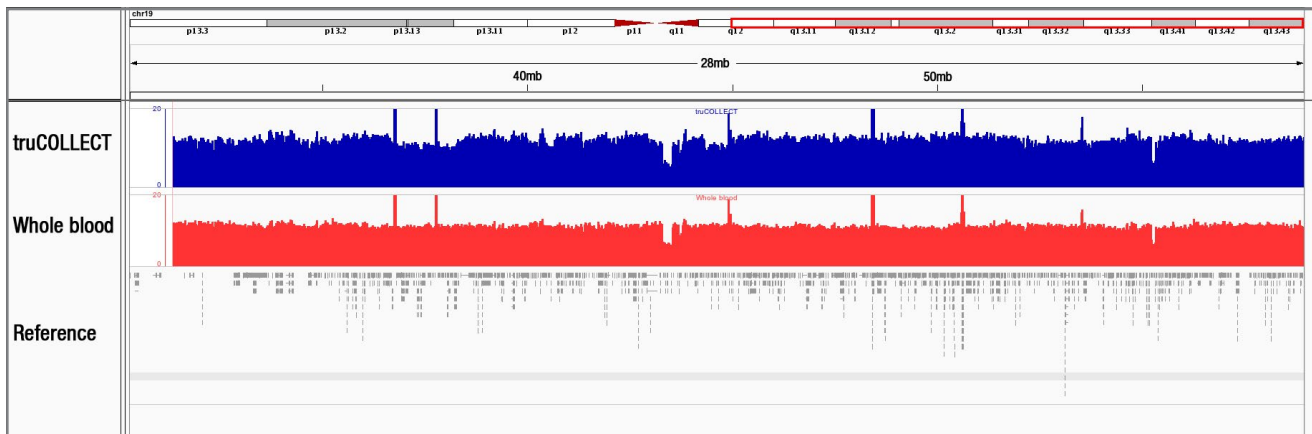
#### Extract

- AFA-enabled active biomolecule extraction
- Typically, >1  $\mu$ g DNA yield from 80  $\mu$ l of fresh blood
- Extract molecular biology grade DNA

## truCOLLECT DNA Yield and Quality Comparable to Fresh Whole Blood



## Whole Genome Coverage Depth Comparable to Fresh Blood



Whole genome sequencing coverage depth obtained from truCOLLECT extracted DNA is comparable to the coverage depth obtained from DNA extracted from fresh blood. Analysis indicates greater number of reads sequenced at over the desired 10X coverage with the truCOLLECT extracted DNA. ([www.covaris.com/wp-content/uploads/cvAGBTPoster2016.web\\_.pdf](http://www.covaris.com/wp-content/uploads/cvAGBTPoster2016.web_.pdf))

Part #	Product Name	Description
520254	truCOLLECT-plus Stabilization, Transport, and Storage Kit (10)	Optimized for up to 80 $\mu$ l of whole blood, 10 barcoded truCOLLECT-plus swab/caps, and 10 tamper-evident indicator desiccant/storage containers
520259	truXTRAC DNA Kit for truCOLLECT-plus - Column (10)	Column-based DNA extraction and purification reagents and consumables for 10 truCOLLECT-plus dry-stabilized whole blood samples
520260	truXTRAC DNA Kit for truCOLLECT-plus - Magnetic Bead (10)	Magnetic bead-based DNA extraction and purification reagents and consumables for 10 truCOLLECT-plus dry-stabilized whole blood samples